

AIRVERSA



# Purelle

## Smart Air Purifier

Model: AP2



User Manual

AP2

# Hello!

Thank you for choosing Purelle, our latest innovative product that combines powerful air purification and smart capabilities. Airversa specializes in creating air treatment products that truly improve the quality of the air you breathe. A lot of technology have been built into the Purelle; it works with Apple HomeKit using Thread technology, the latest future proof wireless protocol for the smart home. With a thread-enabled Border Router (HomePod mini or 2021 Apple TV 4K), you can control your Purelle using your iOS devices anytime, anywhere. Its advanced 3-Stage True HEPA Filtration system removes 99.97% of airborne contaminants down to 0.3 microns.

Purelle is optimized for small and mid-sized rooms such as bedrooms, living rooms, basements, home gyms, kitchens, offices, and more. We make it compact and stylish enough to perfectly fit on a tabletop, and easy enough to move from room to room.

For now, please be sure to explore all of its features outlined in this manual. If you have any questions, feel free to just drop us an email anytime. We'd love to assist you to get the most out of it!

# IMPORTANT SAFETY INSTRUCTIONS

---

**READ ALL INSTRUCTIONS BEFORE USING.  
IF THE POWER CORD OR UNIT DOES NOT WORK, CONTACT  
AIRVERSA CUSTOMER SERVICE IMMEDIATELY.**

When using electrical products, especially when children are present, basic safety precautions should always be followed, including the following:

## ATTENTION

- Check your air purifier cord and plug connections. Faulty wall outlet connections or loose plugs can cause the outlet or plug to overheat. Be sure the plug fits tightly in the outlet.
- This air purifier is not intended for use in bathroom, laundry areas, and similar moist indoor locations.
- To disconnect the air purifier, first turn controls to the off position, then remove the plug from outlet.
- Use this air purifier only for its intended use as described in this manual. Any other use not recommended by the manufacturer may cause fire, electrical shock, or injury to persons.
- To effectively clean air, keep windows and doors closed while the air purifier is on.
- This product is intended for household use only.
- This product is not intended for use by persons (including children) with reduced physical, sensory or mental capabilities, or lack of experience and knowledge, unless they have been given supervision or instruction concerning use of the appliance by a person responsible for their safety.
- This air purifier is not intended to be used to preserve documents or in art conservation.

---

## **MUST DOs**

- Always unplug the air purifier when not in use for a long time.
- Always unplug the air purifier from the electrical outlet immediately before cleaning or replacing filters.
- Always keep the cord away from heated surfaces.
- Always place the air purifier on a firm, leveled surface.
- Always place the air purifier at least 6 inches away from walls and 3 feet from heat sources such as stoves, radiators, or heaters.

## **WARNINGS**

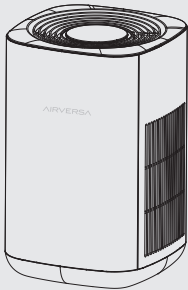
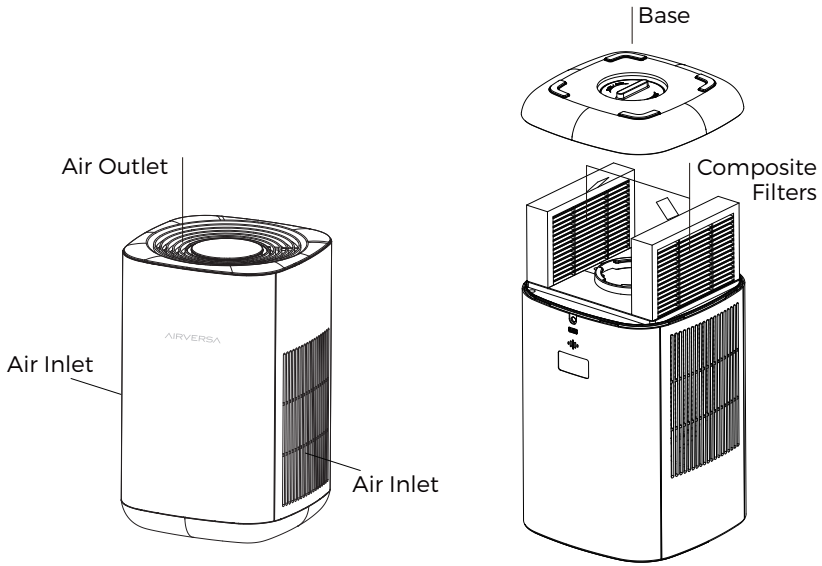
- Do not reach for the air purifier that has fallen into water. Unplug it immediately.
- Do not place or store appliance where it can fall or be pulled into a tub or sink.
- Do not place in or drop into water or other liquid.
- Do not operate in wet or moist conditions. Keep dry.
- Do not touch the air purifier or its power plug with wet hands.
- Do not attempt to defeat this safety feature. To do so could result in an electrical shock hazard.
- Do not operate the air purifier with a damaged cord or plug, or after the air purifier malfunctions, or has been dropped or damaged in any manner.
- Do not run the cord under carpeting.
- Do not cover the cord with throw rugs, runners, or similar coverings.

- 
- Do not route cord under furniture or appliances. Arrange the cord away from traffic areas where it can be tripped over.
  - Do not tilt or move the air purifier while it is in operation. Shut it off and remove the plug from the outlet before moving it.
  - Do not insert or allow foreign objects to enter any ventilation or exhaust opening as this may cause an electrical shock or fire, or damage the air purifier.
  - Do not block air intakes or exhaust in any manner. Do not use on any soft surface, like a bed, where openings may become blocked.
  - Do not operate Purelle air purifier without filters.
  - Do not wash and reuse the filters.
  - Do not use outdoors.

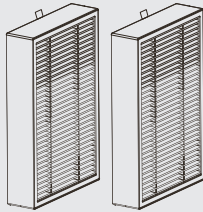


**SAVE THESE IMPORTANT INSTRUCTIONS  
FOR EASY REFERENCE.**

# WHAT'S IN THE BOX



1



2



3

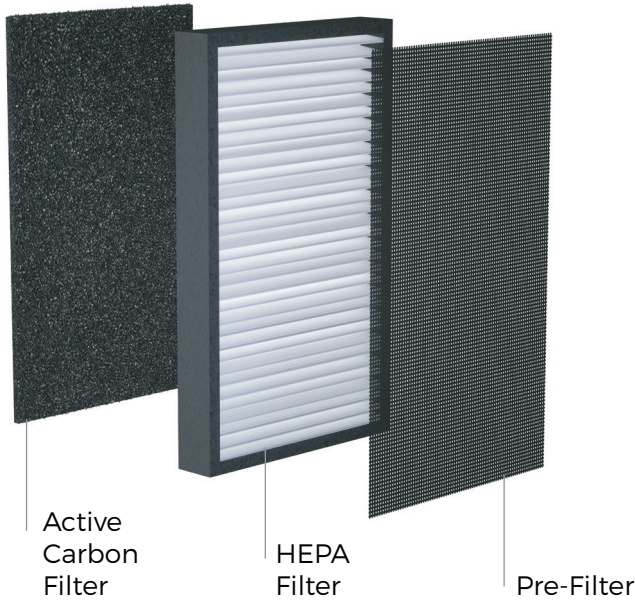


4

- 1 Purelle Smart Air Purifier
- 2 H13 True HEPA Composite Filter Set (Inside Device)
- 3 User Manual
- 4 \*Power Adapter

\*The image shown here is indicative only. If there is inconsistency between the image and the actual product, the actual product shall govern.

# 3-STAGE HEPA H13 AIR FILTRATION



## Disposing of used filters

- Filters can't be cleaned or recycled. After removing a used filter, wrap it in an airtight plastic bag for disposal. As an extra precaution, wear gloves when handling a dirty filter.
- Please dispose the used filters as combustible rubbish.



**Do not wash and reuse the filters.**

**For optimal performance, only Airversa filters should be used with this unit.**



**To purchase replacement filters, please go to:**  
**[www.airversa.com](http://www.airversa.com)**

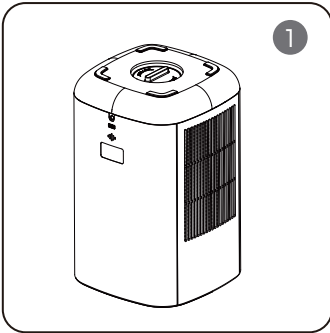
# SPECIFICATIONS

---

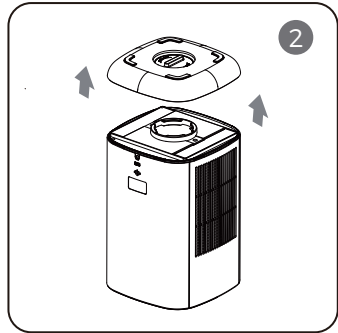
Model Name	AP2
Rated Input Voltage	100-240 V 50/60 Hz
Rated Power	24 W
Standby Power	0.5 W
CADR	130 CFM / 221 m <sup>3</sup> /h
Noise Level	28 - 53 dB
Optimal Room Size	28 m <sup>2</sup> or 300 sq. ft.
Working Temperature	4-104 °F / 0 - 40 °C
Typical Filter Life	3000 hrs
Product Weight	2.96 kg
Product Dimension	L 8.66 x W 8.66 x H 13.58 in L 220 x W 220 x H 345 mm



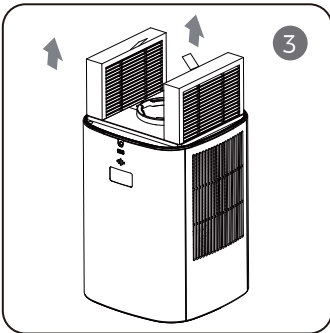
# SET UP PURELLE



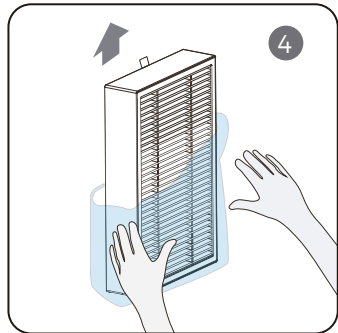
Unscrew the knob on the base according to the directional marks.



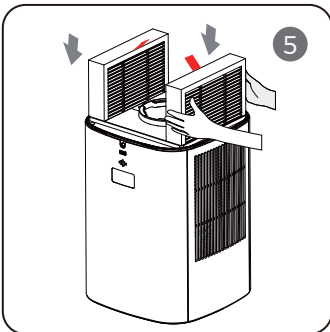
Remove and put aside the base.



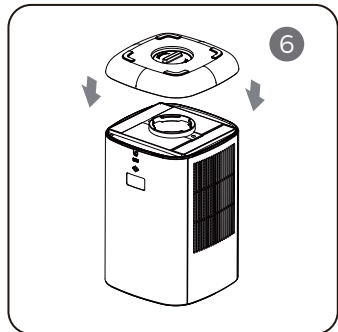
Take out the new filters (wrapped in plastic films) from the product.



**Remove the plastic films on the filters.**

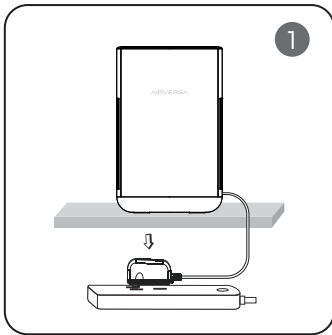


Install the filters into the product.  
**The pull tabs should face inward.**

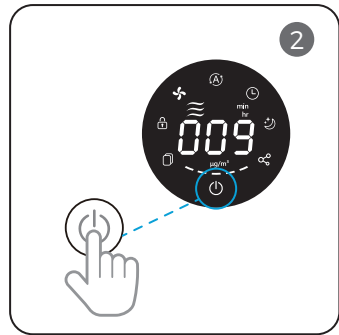


Install the base to the product, tighten the knob according to directional marks.

# LET'S BEGIN

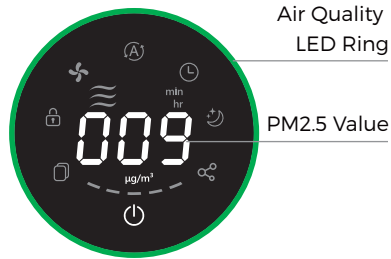


Once connected to the air purifier, plug the adapter to a standard AC outlet, and you will hear a "ding" sound.



Tab the power button on the control panel to turn it on. Meanwhile, the screen lights up.

## Real-time Air Quality Display



Range	Air Quality	Ring Color	Fan Speed in Auto Mode
000-035	Excellent		
036-075	Good		
076-115	Fair		
116-200	Inferior		
201-999	Poor		

**Clear Air is on the Way!**

# HOW TO USE

---

## Control Panel Explained



### Auto Mode Button



Tap to turn Auto Mode on/off

When Auto Mode is active, Purelle uses its built-in PM 2.5 sensor to adjust the fan speed automatically based on air quality. For example, the better the air quality, the lower the fan speed, or vice versa.

### Timer Button



Tap to cycle through timer options

Each increment is 1 hour. The timer will count down from your selected time. When the time is finished, Purelle will turn off. To cancel a timer, tap the button repeatedly until the display reads "0".

---

## Sleep Mode Button



Tap to turn Sleep Mode on/off

Sleep Mode operate quietly by using a fan speed lower than low speed. It will turn off the display after 10 seconds if no other buttons are touched. When the display is turned off, tap any button to turn the display back on.

## Network Indicator



Indicates pairing status

Product has been paired to the network > Light stays on

Product has not been paired to the network > Light will blink and then turn off after 5 minutes each time when the product is powered on.

Press & hold 5s to enter pairing mode.

## Fan Speed Button



Tap to cycle through fan speeds

Tapping the Fan Speed Button while the air purifier is in Auto Mode will exit that mode.

## Child Lock Button



Prevents current settings from being changed

Press and hold for 5 seconds to turn Display Lock on/off. The indicator will blink 3 times along with 2 beeps when any other button is tapped to indicate that Display Lock is on.

## Filter Status Indicator

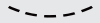


Press & Hold to reset filters

Blinks red when the filter should be checked or replaced.

Press and hold for approx. 5s to reset the Filter Status Indicator.

## Filter Life Indicator



Indicates filter consumption

## Power Button



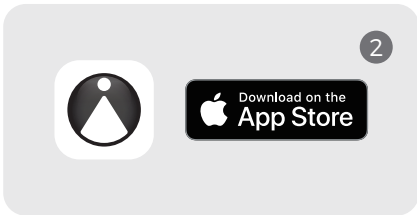
Tap to turn Purelle on/off

# APPLE HOME (THREAD) SETUP

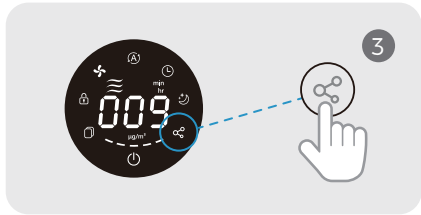


Make sure you have the following Apple Home Hub already setup:

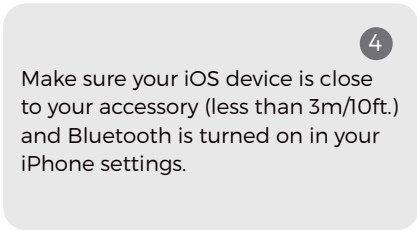
- Apple HomePod mini or;
- 2021 Apple TV 4K or later



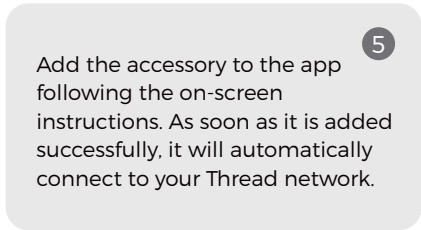
Download the Sleekpoint App from the Apple App Store, open it and create an account, or open the Apple Home App.



Press & hold the Network button on the touch panel for approx. 5s to enter pairing mode along with 3 beeps.



Make sure your iOS device is close to your accessory (less than 3m/10ft.) and Bluetooth is turned on in your iPhone settings.

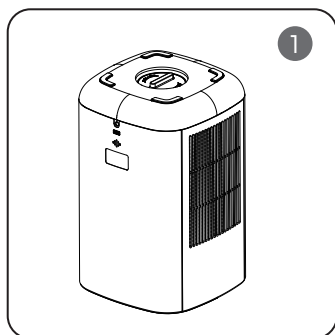


Add the accessory to the app following the on-screen instructions. As soon as it is added successfully, it will automatically connect to your Thread network.

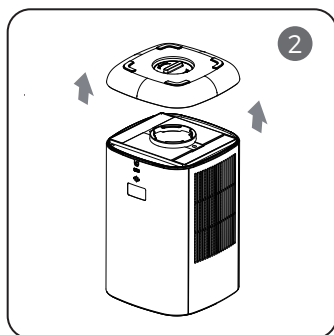
## Important Notice

When an accessory is added successfully for the FIRST TIME, it usually takes approx. 5-10 minutes to be able to connect to the Thread network. However, if it is still not able to connect to Thread after a while, reboot your iOS device or your Apple Home Hub and then check again.

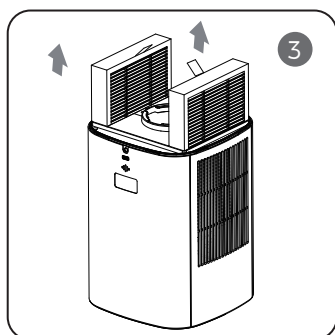
## FILTER REPLACEMENT



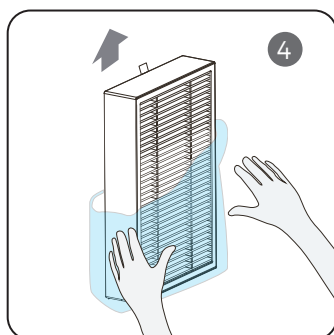
Unscrew the knob on the base according to the directional marks.



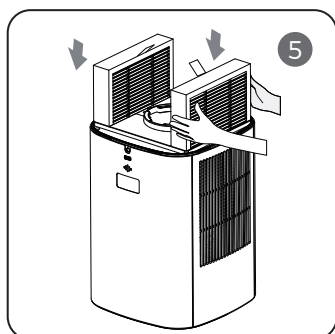
Remove and put aside the base.



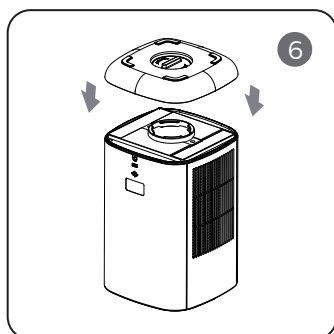
Pull the tabs to remove the old filters from the air purifier.



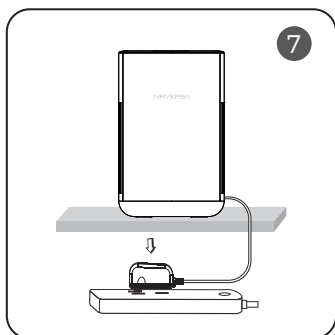
**Remove the plastic films on the new filters.**



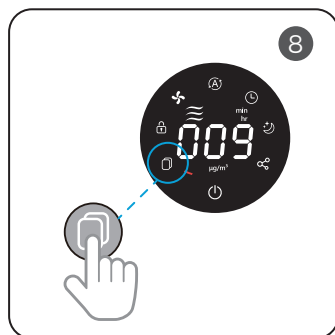
Install the new filters into the air purifier. **The pull tabs should face inward.**



Install the base to the air purifier, tighten the knob according to directional marks.



Once connected to the air purifier, plug the adapter to a standard AC outlet, and you will hear a “ding” sound.



Press and hold the Filter Status Indicator for approx. 5s to reset the indicator.

## CLEANING AND MAINTENANCE

### Cleaning the Pre-Filter


It is recommended to vacuum the pre-filter once a month under normal usage:

- 1 Unplug the air purifier.
- 2 Unscrew the knob on the base according to the directional marks.
- 3 Remove and put aside the base.
- 4 Pull the tabs to remove the filters from the air purifier.
- 5 Vacuum the light-color sides of the filters using the brush attachment of your vacuum cleaner, cleaning it thoroughly.
- 6 Install the filters back into the air purifier. The tabs should face inward.
- 7 Install the base to the product and tighten the knob according to directional marks.
- 8 Once connected to air purifier, plug the adapter to a standard AC outlet, and you will hear a “ding” sound.
- 9 Power on the air purifier, then press and hold the Filter Status Indicator for approx. 5s to reset the indicator.



**Vacuum-cleaning the pre-filter help remove large particles partially and only. It does not extend the filter life.**

# TROUBLESHOOTING

Problem	Possible Cause	Possible Solution
Air purifier does not operate	Not plugged in	Plug in the air purifier
	Power button not pressed	Press  to turn it on
	No power	Check circuits, fuses, try a different outlet
Reduced airflow	The air inlet(s) or outlet may be blocked	Make sure side air inlets or top air outlet are not blocked
	Pre-Filter needs vacuuming	Vacuum the pre-filter with the brush attachment of your vacuum cleaner
	The filter needs to be replaced	Replace the filter
Reduced odor removal	The filter needs to be replaced	Replace the filter
Excessive noise	Air purifier is not level	Place the unit on a flat and level surface
Filter Status indicator remains lit after filter replacement	The Filter Status indicator needs to be reset	Press and hold the Filter Status Indicator for approx. 5s to reset the indicator



**If you need further assistance, please feel free to contact us via [support@airversa.com](mailto:support@airversa.com)**



# WARRANTY

---

Sleekpoint Innovations Co., Ltd. (Sleekpoint) warrants this product to the original purchaser to be free from defects in material and workmanship, under normal use and conditions, for a period of 1 year from the date of original purchase.

Sleekpoint agrees, at our option during the warranty period, to repair any defect in material or workmanship or furnish an equal product in exchange without charge, subject to verification of the defect or malfunction and proof of the date of purchase.

There is no other express warranty.

This warranty does not apply:

- If the product has been modified from its original condition;
- If the product has not been used in accordance with directions and instructions in the user manual;
- To damages or defects caused by accident, abuse, misuse or improper or inadequate maintenance;
- To damages or defects caused by service or repair of the product performed by an unauthorized service provider or by anyone other than Airversa;
- To damages or defects occurring during commercial use, rental use, or any use for which the product is not intended;
- To damages or defects exceeding the cost of the product.

Sleekpoint will not be liable for indirect, incidental, or consequential damages in connection with the use of the product covered by this warranty.

This warranty extends only to the original consumer purchaser of the product and is not transferable to any subsequent owner of the product regardless of whether the product is transferred during the specified term of the warranty.

This warranty does not extend to products purchased from unauthorized sellers. Sleekpoint's warranty extends only to products purchased from authorized sellers that are subject to Sleekpoint's quality controls and have agreed to follow its quality controls.

All implied warranties are limited to the period of this limited warranty.

---

If you discover that your product is defective within the specified warranty period, please contact Customer Support via support@airversa.com. DO NOT dispose of your product before contacting us. Once our Customer Service Team has approved your request, please return the product with a copy of the invoice and order ID.

## **FC** FCC WARNINGS

---

This device complies with part 15 of the FCC Rules. Operation is subject to the following two conditions: (1) This device may not cause harmful interference, and (2) this device must accept any interference received, including interference that may cause undesired operation. Note: This equipment has been tested and found to comply with the limits for a Class B digital device, pursuant to part 15 of the FCC Rules. These limits are designed to provide reasonable protection against harmful interference in a residential installation. This equipment generates, uses and can radiate radio frequency energy and, if not installed and used in accordance with the instructions, may cause harmful interference to radio communications. However, there is no guarantee that interference will not occur in a particular installation. If this equipment does cause harmful interference to radio or television reception, which can be determined by turning the equipment off and on, the user is encouraged to try to correct the interference by one or more of the following measures:

- Reorient or relocate the receiving antenna.
- Increase the separation between the equipment and receiver.
- Connect the equipment into an outlet on a circuit different from that to which the receiver is connected.
- Consult the dealer or an experienced radio/TV technician for help.

Warning: Changes or modifications made to this device not expressly approved by Shenzhen Rundian Innovation Technology Co. Ltd. may void the FCC authorization to operate this device. Note: The manufacturer is not responsible for any radio or TV interference caused by unauthorized modifications to this equipment. Such modifications could void the user's authority to operate the equipment.

Contains FCC ID: 2AA72-PTR9818



Zum Herunterladen scannen.



Scannez pour télécharger.



Escanear para descargar.



Scansiona per scaricare.

**USER MANUAL**



## CUSTOMER SUPPORT

If you have any questions or concerns about your new product, please feel free to contact our Customer Service Team.



**support@airversa.com**



**www.airversa.com**